



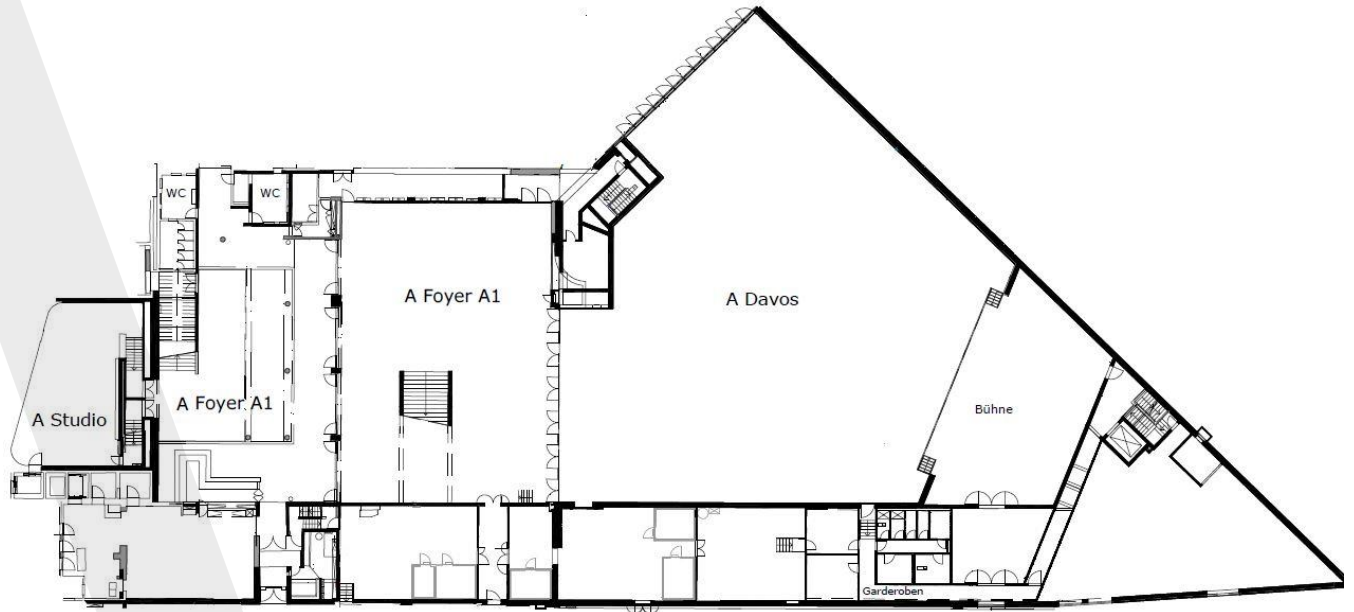
CAPACITY & FLOOR PLAN CONGRESS CENTRE DAVOS



A Davos



A Foyer A1



0 Talstrassengeschoss

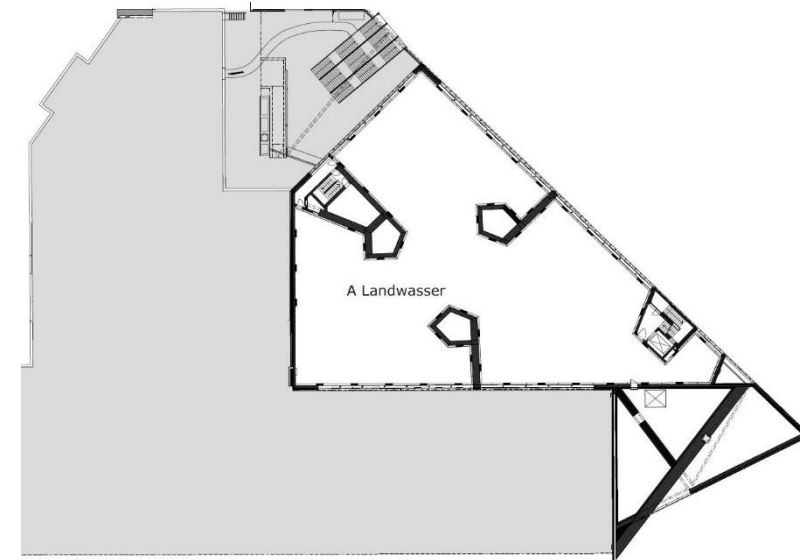
WING A	sqm	Additional sqm	Height in metres	People Theatre seating	People Seminar seating	People Banquet seating (à 6 people)	People Banquet seating (à 8 people)	People cabaret seating (à 6 people)	U-style seating	Block seating
Davos	1'300	860	8.61	1'800	1'000	1'250	640	480		
Davos (2/3)	800	860		800	600	696	400	300		
Davos (1/3)	500	860		500	330	360	240	180		
Studio	130	320	2.96	126	96	120	64	36	36	42
Foyer A1	860		3.36 - 6.61				138			



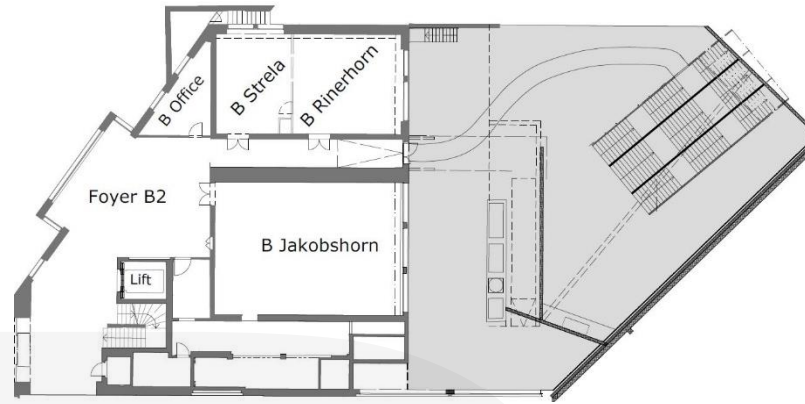
A Wisshorn

1 Parkgeschoss

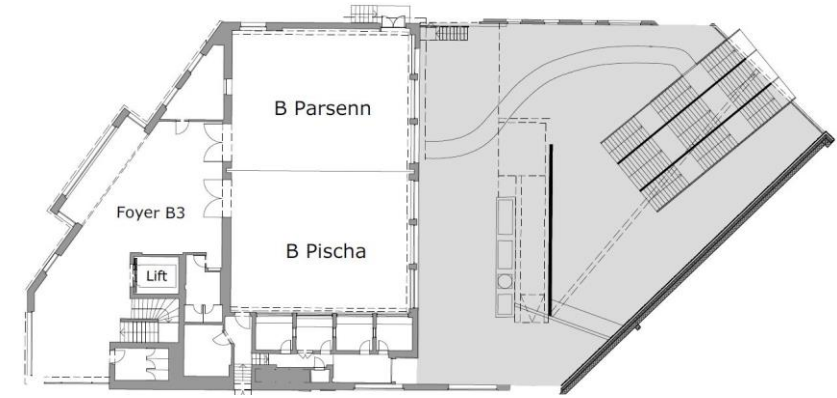
WING A	□ sqm	□□ Additional sqm	↕ Height in metres	●●● People Theatre seating	●●●● People Seminar seating	●●●● People Banquet seating (à 6 people)	●●●●● People Banquet seating (à 8 people)	●●●●● People cabaret seating (à 6 people)	●●●● U-style seating	●●●●● Block seating
Landwasser	1'500		2.68							
Forum	130	320	3.25	126	96	120	64	36	39	42
Congress Office	54		2.98				16		10	12
Dischma	115	860	4.44	100	84	96	64	48	39	45
Flüela	115	860	3.21	100	84	96	64	48	39	45
Sertig	115	860	3.22	100	84	96	64	48	39	45
Schwarzhorn	140	860	4.45	126	96	120	64	48	39	45
Seehorn	140	860	4.43	126	96	120	64	48	39	45
Wisshorn	120	860	3.07	120	96	120	64	48	39	45



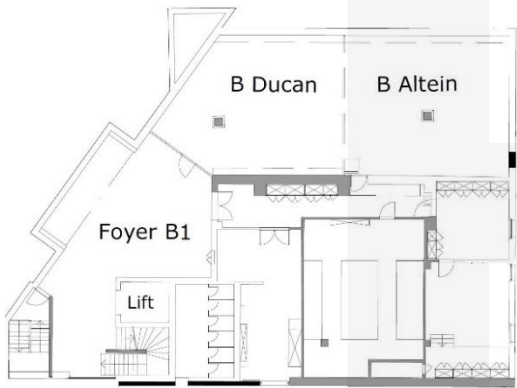
3 Promenadengeschoss



1 Parkgeschoss



2 Zwischengeschoss



0 Talstrassengeschoss

WING B	sqm	Additional sqm	Height in metres	People Theatre seating	People Seminar seating	People Banquet seating (à 6 people)	People Banquet seating (à 8 people)	People cabaret seating (à 6 people)	U-style seating	Block seating
Pischa + Parsenn	248	160	3.30	300	210	240	152	102	63	78
Pischa	124	160		120	96	120	80	60	33	48
Parsenn	124	160		120	96	120	72	54	33	48
Jakobshorn	127	190	2.75	120	96	120	72	54	36	42
Rinerhorn + Strela	94	190	2.75	80	60	72	48	36	36	42
Rinerhorn	56	190		50	36	54	24	18	18	24
Strela	38	190		30	24	18	16	6	15	18
Foyer B2	190		2.75				64	48		
Foyer B3	160		2.75				64	48		

WING B	sqm	Additional sqm	Height in metres	People Theatre seating	People Seminar seating	People Banquet seating (à 6 people)	People Banquet seating (à 8 people)	People cabaret seating (à 6 people)	U-style seating	Block seating
Ducan + Altein	187	140	2.97	125	78	144	80	60	39*/57**	48*/66**
Ducan	102	140		96	60	96	48	36	27	36
Altein	85	140		54	51	54	40	30	27	33
Level B1	327		2.97	276	183	276	120	90		
Foyer B1	140		2.97	126	72	126	40	30		

* variation between columns // ** variation around columns



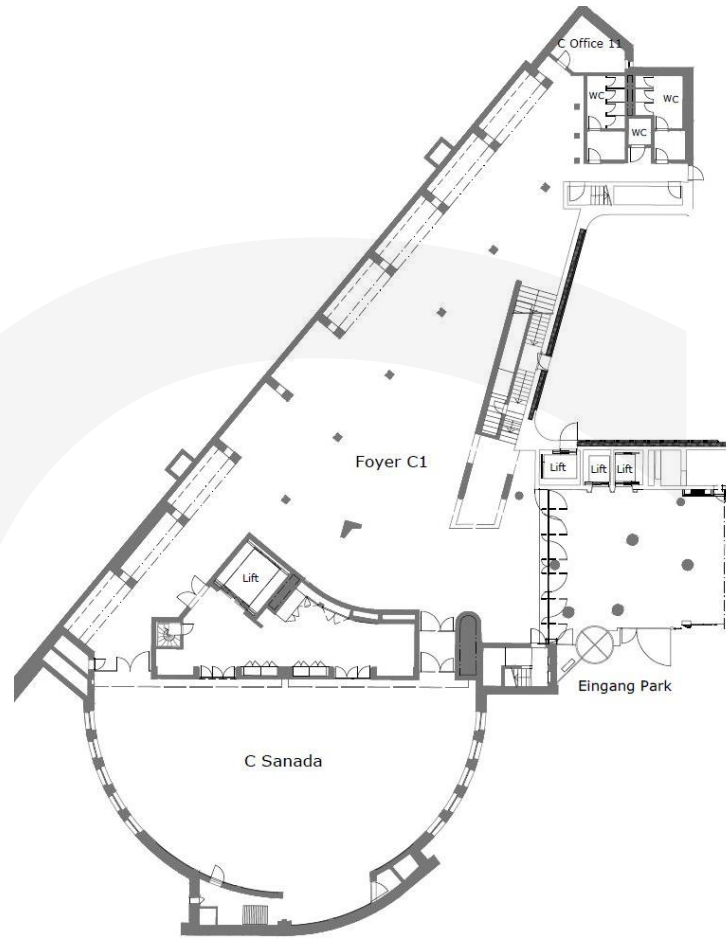
B Pischa/Parsenn



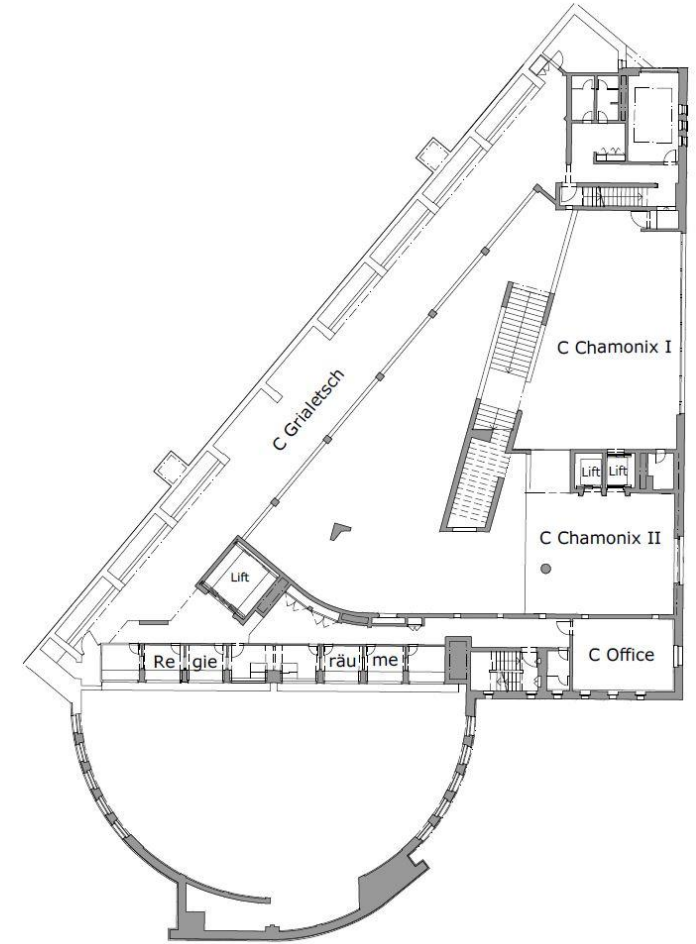
C Sanada






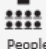
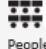





Eingang Park

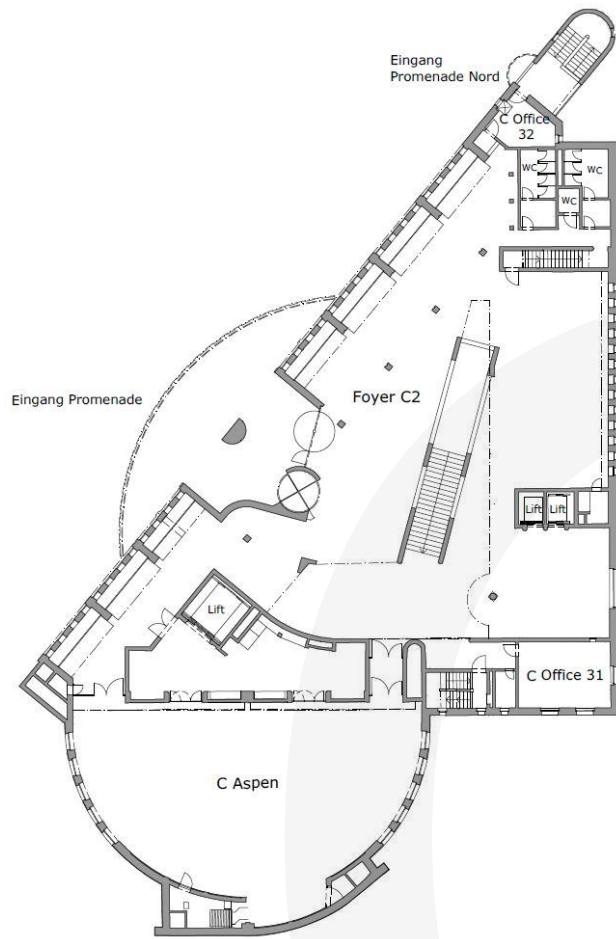


1 Parkgeschoss

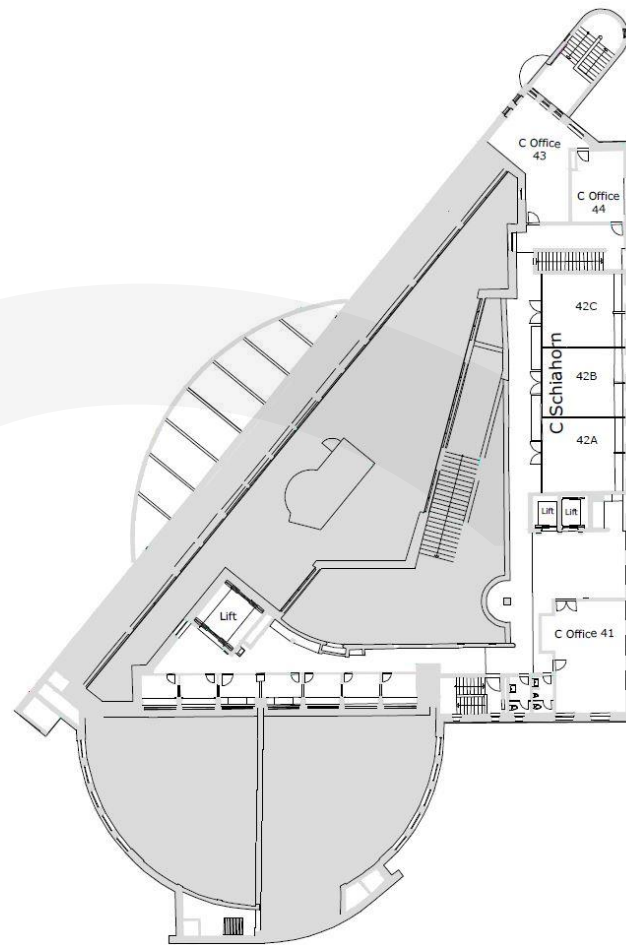


2 Zwischengeschoss

WING C	 sqm	 Additional sqm	 Height in metres	 People Theatre seating	 People Seminar seating	 People Banquet seating (à 6 people)	 People Banquet seating (à 8 people)	 People cabaret seating (à 6 people)	 U-style seating	 Block seating
Sanada	315	690	4.63	310	250	280	152	114	54	84
Sanada I	165	690		165	120	140	80	60	36	48
Sanada II	150	690		165	120	120	80	60	36	48
Chamonix I	140		2.32 - 2.57	100	69	69	48		30	35
Chamonix II	40		2.48	100	42	66	48		24	30
Foyer C1	690		2.28 - 4.98				200			



3 Promenadengeschoss













4 Obergeschoss



C Aspen



Eingang Promenade

WING C	 sqm	 Additional sqm	 Height in metres	 People Theatre seating	 People Seminar seating	 People Banquet seating (à 6 people)	 People Banquet seating (à 8 people)	 People cabaret seating (à 6 people)	 U-style seating	 Block seating
Aspen	315	620	5.28	310	250	280	152	114	54	84
Aspen I	165	620		165	120	140	80	60	36	48
Aspen II	150	620		165	120	120	80	60	36	48
Schiahorn	89		2.41	80	60	72	48		39	42
Foyer C2	620		2.67 - 5.66				264			